

CREST POWERSONIC™ BENCHTOP CLEANERS SPECIFICATIONS

| Model | Inside Tank Dimensions L x W x H inches centimeters | Overall Dimensions L x W x H inches centimeters | Tank Capacity gallon liter | Ship Wt. lbs kilos | Line Input @ 117v amps (rated) | | | Sonic Power Avg. Wattage |
|---------|--|--|----------------------------------|--------------------------|--------------------------------------|-----|-----|--------------------------------|
| | | | | | T | HT | D | |
| CP 200 | 6 x 5.25 x 4 148 x 134 x 100 | 7 x 6.5 x 10.5 175 x 164 x 270 | .5 1.75 | 6 2.7 | .8 | 1.5 | N/A | 55 |
| CP 230 | 9.5 x 5.25 x 4 237 x 134 x 100 | 11.5 x 6.375 x 9.25 265 x 162 x 295 | .75 2.8 | 9 4.1 | 1.2 | 2.6 | 2.6 | 80 |
| CP 360 | 9.5 x 5.25 x 6 237 x 134 x 150 | 11.5 x 6.375 x 11.625 265 x 162 x 295 | 1 3.8 | 10.8 4.9 | 1.5 | 2.7 | 2.7 | 100 |
| CP 500 | 11.75 x 6 x 6 297 x 148 x 150 | 12.75 x 7 x 11.625 325 x 176 x 295 | 1.5 5.4 | 12.8 5.8 | 1.7 | 3 | 3 | 120 |
| CP 1100 | 11.75 x 9.5 x 8 297 x 237 x 200 | 12.75 x 10.5 x 13 325 x 265 x 335 | 3.25 12.3 | 22 10 | 2.6 | 7.8 | 7.8 | 200 |
| CP 1200 | 19.5 x 5.25 x 6 495 x 134 x 150 | 20.25 x 6 x 10.625 515 x 150 x 270 | 2.5 9.5 | 21 3.5 | 2.6 | 7.8 | 7.8 | 200 |
| CP 1800 | 19.5 x 11.75 x 6 495 x 297 x 150 | 21 x 12.75 x 14.5 530 x 325 x 365 | 5.25 19.6 | 39 17.7 | 3.8 | 12 | 12 | 240 |
| CP 2600 | 19.5 x 11.75 x 8 495 x 297 x 200 | 21 x 12.75 x 14.5 530 x 325 x 365 | 7 26.1 | 38 17.3 | 3.8 | 12 | 12 | 300 |

NOTES:

- All models are available in three (3) configurations:
 - T** 0-30 minute timer
 - HT** 0-30 minute times and thermostatically controlled heat ambient to 80°C (175° F)
 - D** Digital control of heat, time (0-99 minutes), power and degas functions.
- Frequency 42 kHz- 45 kHz
- All models meet FCC requirements
- All models are ETL/CSA approved
- All models are available in 117 volts and 230 volts
- * Digital controls not available with CP 200 model*



CP 1200 HT with SSMB 1200-DH Mesh Basket
with Drain Positioning Handles

CREST ULTRASONICS
Scotch Road • PO Box 7266 • Trenton, NJ 08628
Phone: 609-883-4000 or 1-800-273-7822
Fax: 609-530-0923

CREST ULTRASONICS
Scotch Road • PO Box 7266
Trenton, NJ 08628
Phone: 609-883-4000
1-800-273-7822
Fax: 609-530-0923



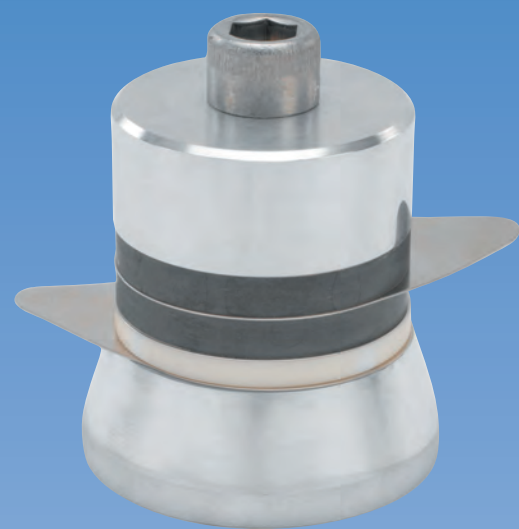
CREST POWERSONIC™ ULTRASONIC BENCHTOP CLEANERS



THE SOUND CHOICE

**Now Available with Ceramically Enhanced
Transducers and Lifetime Heater Warranty**

THE NEW BENCHMARK IN BENCHTOP CLEANING



Patented Ceramically Enhanced Transducers

Crest's Powersonic™ rugged industrial strength performance gives you consistent quality at a benchtop price.

For over 47 years, Crest ultrasonic technology has been used successfully in industrial and biomedical cleaning systems. That same high performance technology has been transferred to the Crest Powersonic™ line of benchtop cleaners. Ceramically Enhanced Industrial Transducers, like those above, provide greater cleaning power and reliability compared to conventional wafer type transducers.

THE DRIVING FORCE IS THE POWER SOURCE

Although the industrial stack transducer has been acknowledged as superior in terms of reliability and performance, benchtop cleaners have always relied on wafer thin discs to produce ultrasonic energy. Crest has brought the superior performance of full-wave 45 kHz Ceramically Enhanced Industrial Transducers to the Benchtop line. What's more, all units are supplied with either 0-30 minute analog or 0-99 minute digital timers and the heaters are thermostatically controlled. If you compare other benchtop cleaners, be sure to compare features because there really is no comparison.

CLEANS LIKE NO OTHER BENCHTOP AVAILABLE

Crest's exclusive Powersonic feature ensures

uniform cleaning throughout the tank by sweeping the ultrasonic frequency 3 kHz, creating overlapping ultrasonic waves. This eliminates inconsistent cleaning due to hot spots (areas of intense ultrasonic activity) in the cleaning solution, caused by the unvarying or "standing" waves produced by conventional ultrasonic power supplies.

MORE POWER TO YOU

When ultrasonic energy is introduced into a cleaning solution, cavitation, the foundation of ultrasonic cleaning, occurs. Ultrasonic energy causes alternating patterns of low and high pressure phases. During the low pressure phases, bubbles, or vacuum cavities, form. In the subsequent high pressure phases these bubbles implode violently. This is called cavitation.

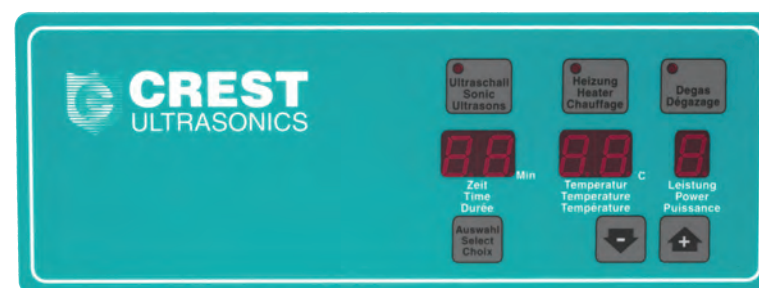
Cavitation provides an intense scrubbing action that leads to unsurpassed cleaning speed and consistency when compared with simple soaking or immersion with agitation. Additionally, the bubbles are small enough to penetrate even microscopic crevices, cleaning them thoroughly and consistently. As a result, ultrasonic cleaning is one of the most highly effective and efficient methods you can use for cleaning a wide array of parts.

HIGH PERFORMANCE CLEANING ACCESSORIES

All Crest benchtop cleaners are supported by a complete line of durable, quality-built ultrasonic accessories. Crest offers you a high performance selection of stainless steel mesh and perforated baskets, beakers, auxiliary pans and beaker positioning covers. Glass, polypropylene, and stainless steel beakers are also available.

In addition, Crest manufactures a wide range of specially blended cleaning solutions, for maximum ultrasonic cleaning results.

Call or email us for information on our Chem-Crest cleaning solutions.



Above: Powersonic Model D digital control of time (0-99 minutes), heat (ambient to 80°C), power level and degas functions. **Top Right:** Powersonic Model T 0-30 minute timer. **Right:** Powersonic Model HT 0-30 minute timer and adjustable thermostatically controlled heat (Ambient to 80°C)



MORE SIZES AND OPTIONS TO MEET YOUR NEEDS



WITH CREST'S POWERSONIC™ YOU'RE IN CONTROL

Crest offers more sizes and options than anyone else. Powersonic ultrasonic cleaners are available in seven sizes, from a half gallon to 7 gallons (1.75 to 26 liters), in three different configurations.

- Lifetime heater warranty.
- 2 year warranty on parts and labor.
- Main on/off switch.
- Analog model with timer.
- Analog model with timer and adjustable thermostatically controlled heater.
- Digital model with timer, heat, power control and degas.
- All timers have continuous operation capabilities.
- Cover included with all units.
- Stainless drain valves supplied on models 1100, 1200, 1800, and 2600 versions.

Many features that add value to your investment have been engineered into Crest's benchtop cleaners.

- Analog or digital timers (digital not available with CP 200 model).
- Ceramically Enhanced Transducers.
- All stainless steel enclosures resist damage from chemical spills and will not crack.
- Sweep Frequency 45 kHz.
- Adjustable, thermostatically controlled heaters (ambient to 80°C).
- Precise control of time, heat, power and degas on digital units.